

PASSAGE PLAN

FALKENBERG

Version 2016

Not for navigation

FALKENBERG PILOT

VHF Channel: 18

Pilot boat: VHF 18 and 16

Phone: +46-771-63 06 80

E-Mail: southcoastpilot@sjofartsverket.se

www.sjofartsverket.se/en/Maritime-services/Pilotage/

[Pilot-Areas/South-Coast-Maritime-Traffic-Area/](http://www.sjofartsverket.se/en/Maritime-services/Pilotage/Pilot-Areas/South-Coast-Maritime-Traffic-Area/)

DEEP SEA PILOT

Phone: +46-771-63 06 80

E-Mail: southcoastpilot@sjofartsverket.se

www.deepseapilotage.se

- 24 hours before ETA pilot station, give preliminary ETA to Southcoast pilots.
- 5 hours before ETA pilot station, confirmation of ETA to Falkenberg pilots.
- 1 hour before ETA pilot station, confirmation of ETA to Falkenberg pilots.

www.sjofartsverket.se



Date

Pilot (conning)

Pilot (co)

Name of berth

Max draught

LOA

Breadth

Propulsion

Thruster(s)

Rudder

Maneuvering characteristics

Defects

Tugboat (1) name and position

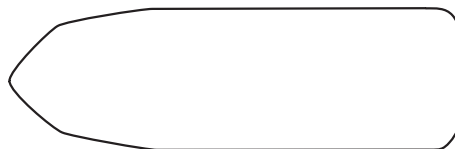
Tugboat (2) name and position

VHF working channel

Wind

Current

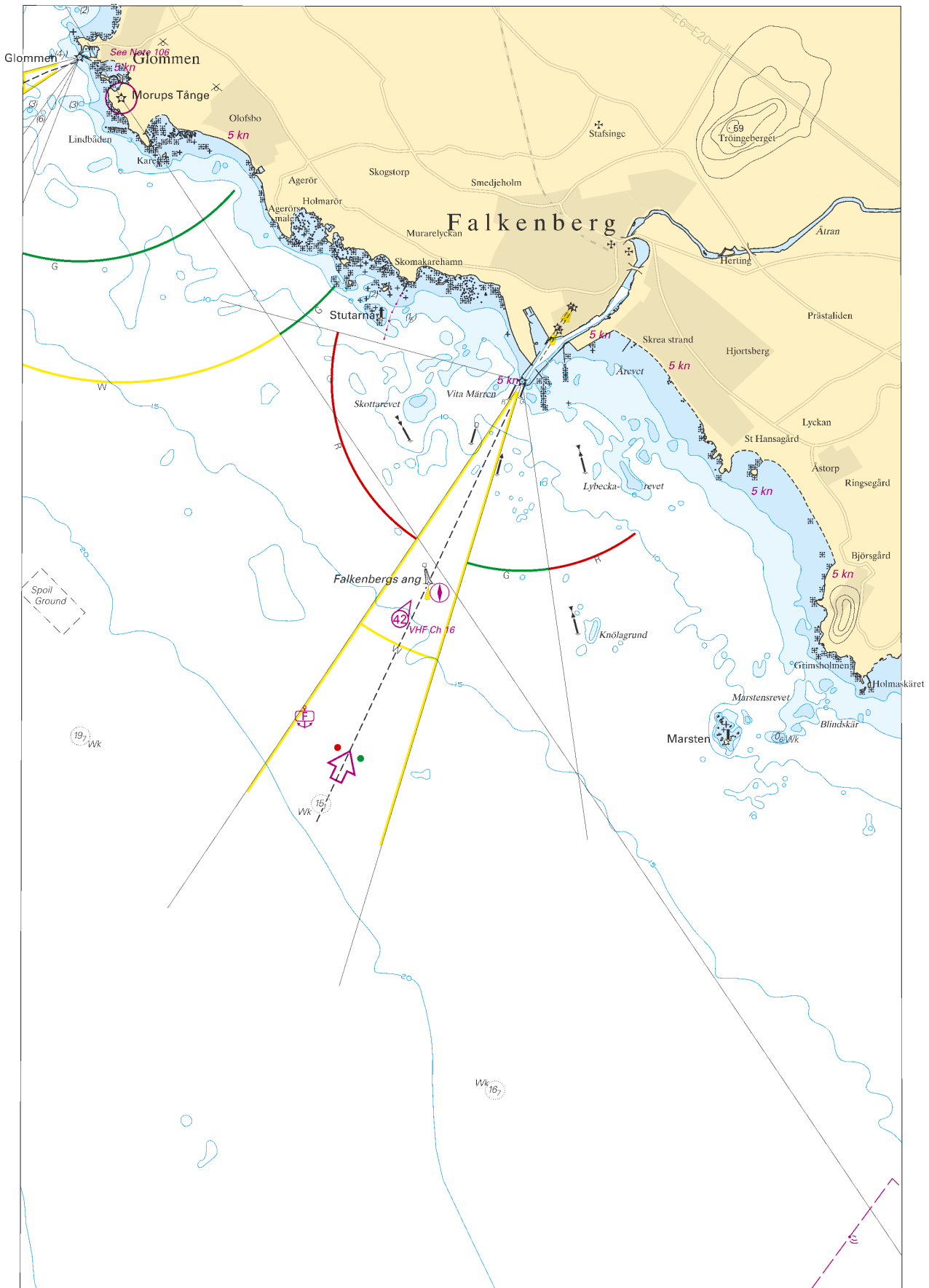
Water level



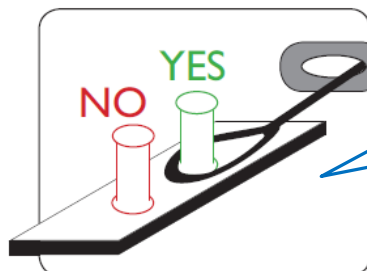
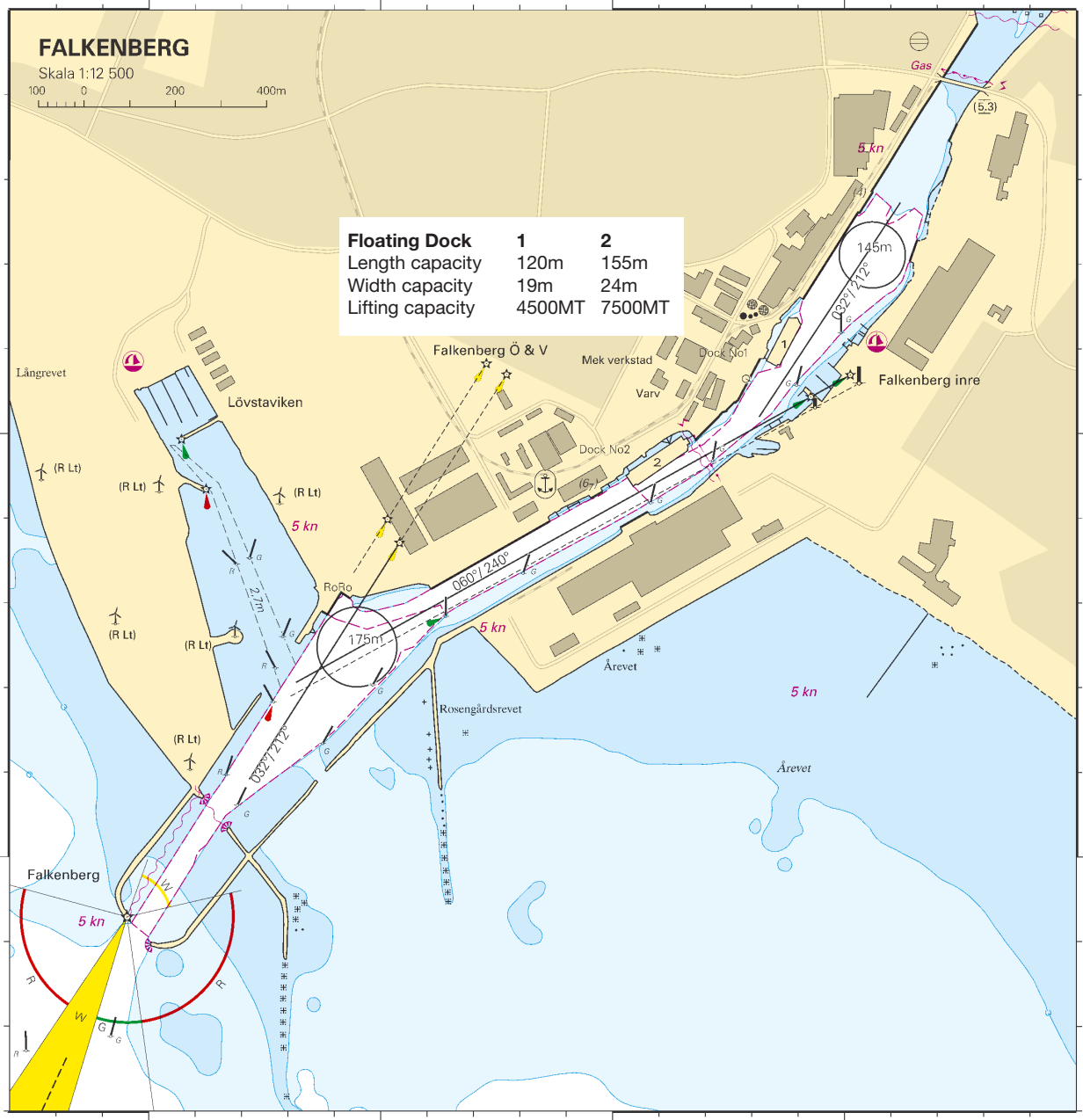
If any doubt - please challenge your pilot directly!

Falkenberg overview

> [Link to Restrictions and recommendations at the SMA website](#)



Falkenberg port



Inform pilot of bollard SWL
告知领航员关于系缆桩的安全载重负荷